



Barbara Haswell

Non-Principal Property
Practitioner
Registered with PPRA
(FFC 115 570 7)
0739031222

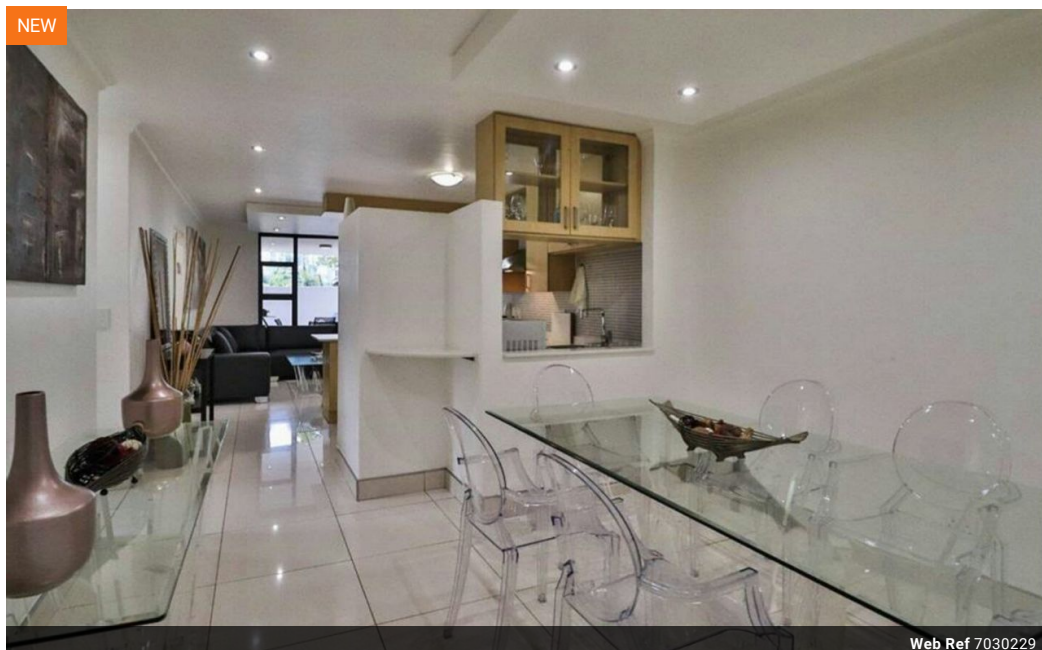
barbarah@cleproperties.co.za

Contact Northern Suburbs

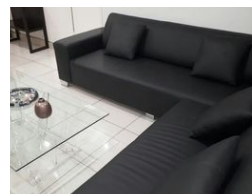
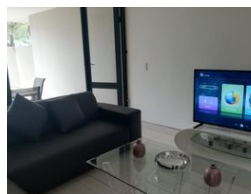
011 0271878

Shop 2B
Northlands Corner
Corner Witkoppen Road and Newmarket
Street
North Riding
Randburg

NEW



Web Ref 7030229



R20,000 pm

Lease Period None

Availability Immediately

Deposit -

Annual Escalation -



2



2

2 Bedroom Apartment in Morningside

Fully furnished, very spacious, 2 bedroom, 2 bathroom ground floor apartment at Katherine Quay in Sandown. Living area with an open plan lounge and dining room as well as a modern kitchen with space for 3 appliances. Bedrooms are both spacious, 2 full bathrooms. Private patio with garden. 2 secure basement parking bays.

Katherine Quay is a lovely complex situated just off Katherine Street and only a walk away from Sandton City. The complex is secure with 24 hour security, an access gate, card access, underground parking and a manned guard. Also featured is a gym, boardroom facilities, elevators, ample visitors parking and prime location, DSTV and Fibre available.

Features

Interior

Bedrooms	2
Bathrooms	2
Recep. Rooms	2
Furnished	Yes

Exterior

Carparks / Parkings	2
Security	Yes
Pool	Yes

Sizes

Floor Size	110m ²
------------	-------------------