

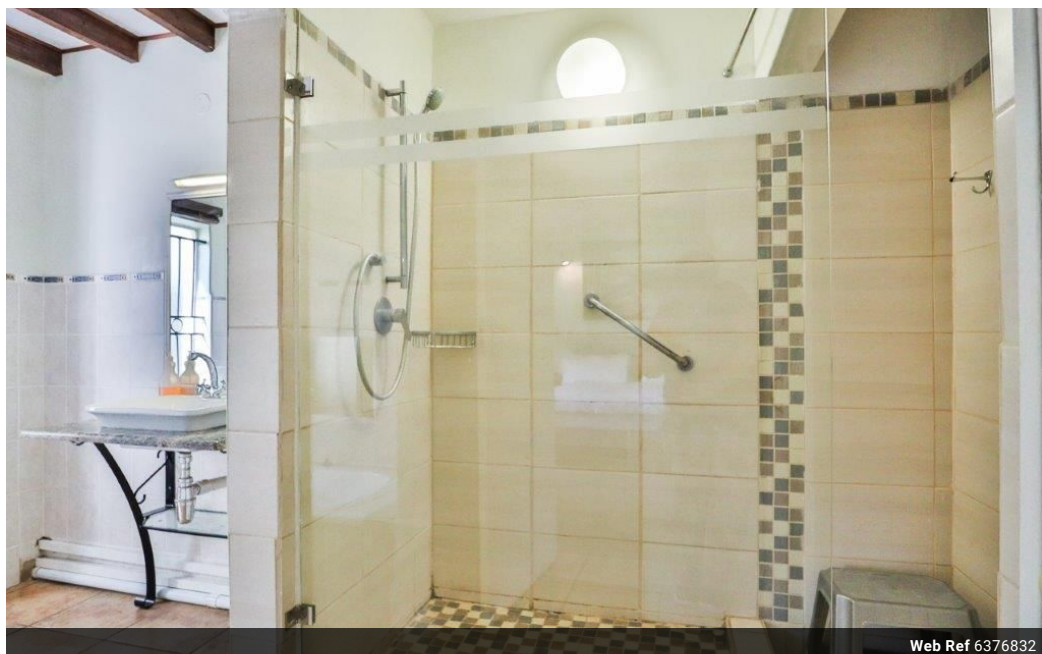
**Ronelda Richter**  
Non-Principal Property  
Practitioner  
Registered with PPRA  
(FFC 115 413 0)  
0824553170

ronelda@cleproperties.co.za

Contact Head Office - Kempton  
Park

011 9758537

12 Duffton Way  
Aston Manor  
Kempton Park



Web Ref 6376832



**R12,500,000**

**Monthly Bond Repayment** R124,797.49

Calculated over 20 years at 10.5% with no deposit.

**Transfer Costs** R1,273,036.00 **Bond Costs** R99,035.00

These calculations are only a guide. Please ask your conveyancer for exact calculations.

 12  12

## MAGNIFICENT LODGES & TENTED CAMP - SET ON THE BANKS OF AN LARGE HUGE DAM IN DINOKENG

MAGNIFICENT LODGES & TENTED CAMP - SET ON THE BANKS OF AN LARGE HUGE DAM IN DINOKENG

PRICE IS VAT EXCLUSIVE

SOLD AS A GOING CONCERN WITH FURNITURE, LINEN AND EQUIPMENT

Luxurious lodges in the heart of the Dinokeng Big Five Reserve, nestled on the banks of an enormous private dam. The variety of different herds that frequent the dam and surrounding veld, ensure that guests enjoy breathtaking views of all that the African bush can offer in this private setting.

Both the waterside setting and the exquisite design of the lodges and tented camp, distinguish this retreat from most others in the reserve. The dam is situated on the property on offer.

Only 30 minutes' drive from Pretoria and one hour from Johannesburg and the OR Tambo International Airport.

Equipped with inverters for electrical...

## Features

### Interior

Bedrooms	12
Bathrooms	12
Kitchens	7
Recep. Rooms	5

### Exterior

Carports / Parkings	1
Security	Yes
Dom. Accom.	1
Pool	Yes

### Sizes

Land Size	22Ha
-----------	------