



Sekwati Mahlatji
Non-Principal Property
Practitioner
Registered with PPRA
(FFC 065 961 0)
082 695 5814

sekwati@cleproperties.co.za

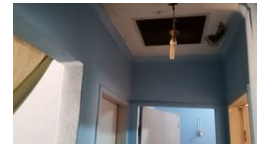
Contact Head Office - Kempton
Park

011 9758537

12 Duffton Way
Aston Manor
Kempton Park



Web Ref 7054558



R770,000

 2  1

Monthly Bond Repayment R7,817.26

Calculated over 20 years at 10.75% with no deposit.

Transfer Costs R25,898.00 **Bond Costs** R19,565.00

These calculations are only a guide. Please ask your conveyancer for exact calculations.

Well-Located Home with Investment Potential – Don't Miss Out

Well-Located Home with Investment Potential – Don't Miss Out

This well-positioned property offers excellent convenience and value. Say goodbye to transport hassles, as this home is ideally located in a sought-after area.

2 spacious bedrooms

Kitchen combined with lounge for open-plan living

1 bathroom with separate toilet

Additional unfinished house at the back, perfect for future development or rental income

Generous stand size of 254m²

An ideal opportunity for first-time buyers or savvy investors. Don't waste time – book your appointment today and take the first step toward securing this valuable property.

Features

Pets Allowed	Yes			
Interior		Exterior		Sizes
Bedrooms	2	Security	Yes	Land Size
Bathrooms	1	Pool	No	254m ²
Kitchens	1			
Recep. Rooms	2			