



**Marieta Erasmus**

Non-Principal Property  
Practitioner  
Registered with PPRA  
(FFC 002 125 0)

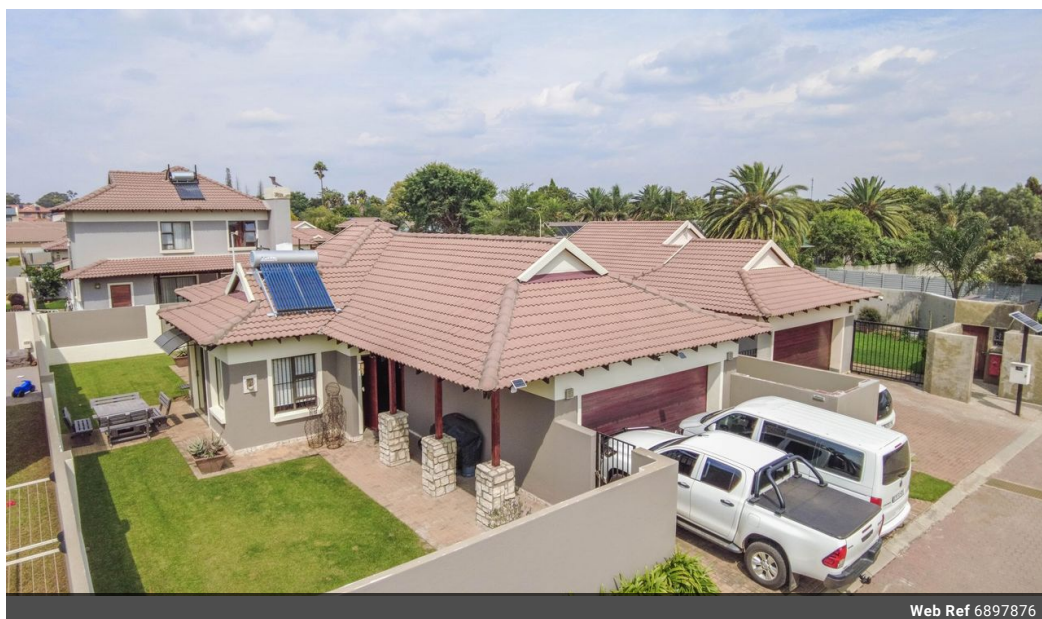
0832691340

[marieta@cleproperties.co.za](mailto:marieta@cleproperties.co.za)

Contact Head Office - Kempton  
Park

011 9758537

12 Duffton Way  
Aston Manor  
Kempton Park



Web Ref 6897876



## R2,100,000

🛏 3   🚿 2   🏠 2

**Monthly Bond Repayment** R21,675.96

Calculated over 20 years at 11% with no deposit.

**Transfer Costs** R83,947.00   **Bond Costs** R34,625.00

These calculations are only a guide. Please ask your conveyancer for exact calculations.

This property blends style functionality and comfort.

This property blends style functionality and comfort.

Step into this welcoming entrance hall where you'll immediately sense

The warmth and charm this home exude.

The open plan lounge dining and kitchen area create a seamless flow ideal for

Both daily living and entertainment.

Retreat to the three spacious bedrooms all adorned with laminate flooring and

Fitted with built-in cupboards. The main bedroom boasts a full ensuite bathroom.

An additional bathroom serves the other bedrooms, providing convenience and comfort.

This home is equipped with modern amenities including air conditioning in kitchen and main

bedroom. This home is totally off grid with inverter and solar gas geyser.

Parking is a breeze with double automated garage and paved driveway with direct entry

To the house.

If it's peace and tranquility you...

## Features

<b>Pets Allowed</b>	Yes				
<b>Interior</b>		<b>Exterior</b>		<b>Sizes</b>	
Bedrooms	3	Garages	2	Land Size	399m²
Bathrooms	2	Security	Yes		
Kitchens	1	Pool	No		
Recep. Rooms	2				