



Dewald van Deventer

Non-Principal Property
Practitioner
Registered with PPRA
(FFC 122 262 2)

0837081089

dewald@cleproperties.co.za

Contact Head Office - Kempton
Park

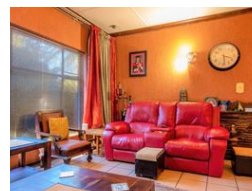
011 9758537

12 Duffton Way
Aston Manor
Kempton Park

SOLD



Web Ref 6537403



R1,499,000

4 2 1

Monthly Bond Repayment R15,472.50

Calculated over 20 years at 11% with no deposit.

Transfer Costs R45,755.00 **Bond Costs** R28,990.00

These calculations are only a guide. Please ask your conveyancer for exact calculations.

Monthly Rates R1,305

Charming Family Home in Birchleigh, Kempton Park

Charming Family Home in Birchleigh, Kempton Park

Nestled in the heart of Birchleigh within walking distance from Laerskool Birchleigh, this spacious 4-bedroom home offers a comfortable family living environment in a prime location.

This is the property you've been waiting for and it comes at a steal of a price.

On offer is a spacious kitchen with a dining room, lounge and a family room. Ample parking is available, and this property comes with a completely separate cottage.

The back yard is large with an established garden and hosts two small Zozo huts as well as a super-spacious wood-cabin for extra storage.

Staff quarters are also available. This property also comes with a borehole and a Jacuzzi.

Good value for money indeed.

Bond finance can be arranged.

For more information, please contact Dewald.

Arrange your...

Features

Pets Allowed		Yes			
Interior				Sizes	
Bedrooms	4	Exterior		Land Size	1,270m²
Bathrooms	2	Garages	1		
Kitchens	1	Carports / Parkings	1		
Recep. Rooms	3	Security	Yes		
		Pool	No		