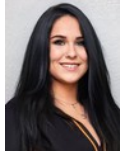




## 3 Bedroom House For Sale in Birchleigh



Janique Steenberg  
0646868388  
janique@cleproperties.co.za

Contact Head Office - Kempton  
Park

011 9758537

12 Duffton Way  
Aston Manor  
Kempton Park



Web Ref 7140483



R2,150,000

3 2.5 2

**Monthly Bond Repayment** R21,827.42

Calculated over 20 years at 10.75% with no deposit.

**Transfer Costs** R86,947.00 **Bond Costs** R34,625.00

These calculations are only a guide. Please ask your conveyancer for exact calculations.

### A Family's Dream: Timeless Birchleigh Homestead with Endless Possibilities!

A Family's Dream: Timeless Birchleigh Homestead with Endless Possibilities!

Discover your forever home—a lovingly preserved modern vintage property that whispers stories of family, comfort, and potential. This isn't just a house; it's a sanctuary designed for generations to thrive and grow.

Vintage Charm Meets Modern Family Living:

• Meticulously maintained property that feels like a warm embrace • Self-sustaining Garden bursting with fresh fruit trees and a small vegetable garden • Spacious layout perfect for busy, growing families

Family-Friendly Features:

• 3 generous carpeted bedrooms with built-in storage • Separate home office with own entrance or another possible bedroom • Cozy fireplace lounge opening to a magical, low-maintenance front garden • Extra flatlet—perfect for grandparents, teens, or additional...

### Features

Pets Allowed		Yes			
Interior		Exterior		Sizes	
Bedrooms	3	Garages	2	Land Size	1,914m²
Bathrooms	2.5	Security	Yes		
Kitchens	1	Pool	No		
Recep. Rooms	3				
Studies	1				

<https://www.cleproperties.co.za>