



4 Bedroom House For Sale in Birchleigh



Dewald van Deventer

Non-Principal Property
Practitioner
Registered with PPRA
(FFC 122 262 2)
0837081089

dewald@cleproperties.co.za

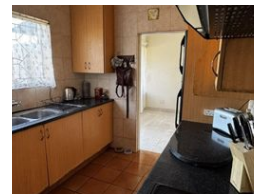
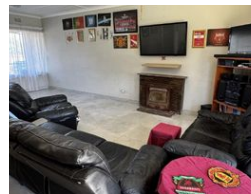
Contact Head Office - Kempton
Park

011 9758537

12 Duffton Way
Aston Manor
Kempton Park



Web Ref 7056246



R1,890,000

🛏️ 4 🚿 2 🏠 1

Monthly Bond Repayment R19,187.83

Calculated over 20 years at 10.75% with no deposit.

Transfer Costs R68,606.00

Bond Costs R32,760.00

These calculations are only a guide. Please ask your conveyancer for exact calculations.

Monthly Rates R1,392

Exceptional Family Home with Income-Generating Cottage – Birchleigh, Kempton Park

Exceptional Family Home with Income-Generating Cottage – Birchleigh, Kempton Park

Located in the highly desirable Horseshoe section of Birchleigh, this newly renovated property offers outstanding space, comfort, and value – perfect for large families or those seeking extra accommodation for extended family or rental income.

Main House Highlights:

This well-maintained and stylish home features four spacious bedrooms and two modern bathrooms. The open-plan lounge and dining area creates a welcoming atmosphere, ideal for family living and entertaining. The kitchen is well-built and thoughtfully designed, with ample storage and functionality.

A double garage provides secure parking and additional space, while the generous yard offers endless potential – whether for children to play, outdoor entertaining, or future...

Features

Pets Allowed		Yes			
Interior				Sizes	
Bedrooms	4	Exterior		Land Size	983m²
Bathrooms	2	Garages	1		
Kitchens	1	Carports / Parkings	2		
Recep. Rooms	2	Security	Yes		
		Pool	No		