

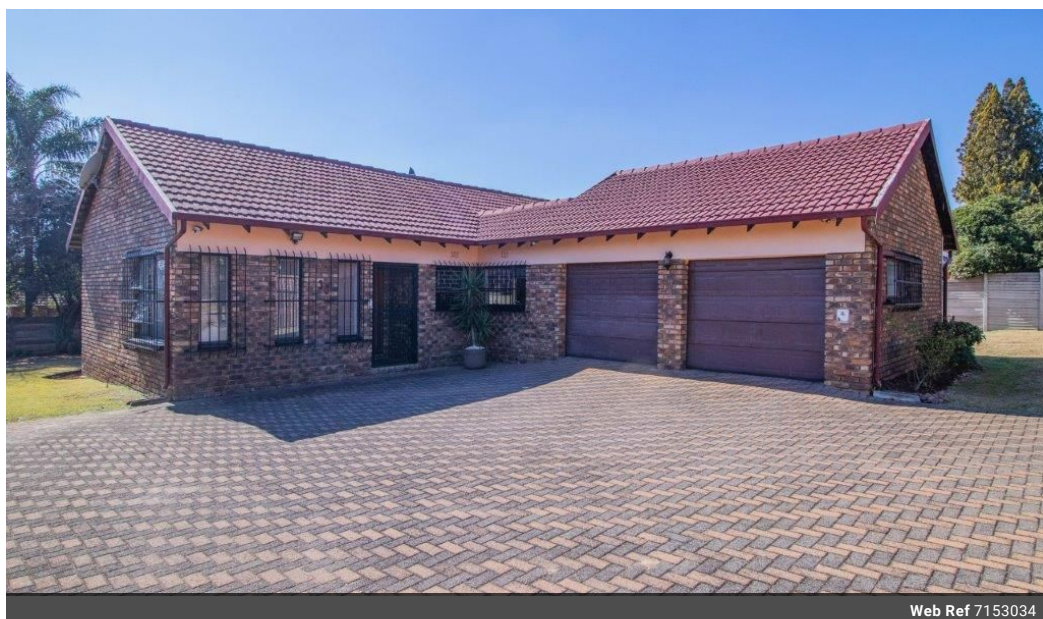


Tremaine Pillay
0665398482
tremaine@cleproperties.co.za

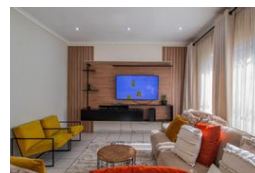
Contact Head Office - Kempton Park

011 9758537

12 Duffton Way
Aston Manor
Kempton Park



Web Ref 7153034



R1,599,000

 4
  2
  2

Monthly Bond Repayment R16,233.51

Calculated over 20 years at 10.75% with no deposit.

Transfer Costs R48,755.00 **Bond Costs** R28,990.00

These calculations are only a guide. Please ask your conveyancer for exact calculations.

Monthly Rates R1,152

Modern 4-Bedroom Home For Sale in Birchleigh North – Secure Enclosed Area

Modern 4-Bedroom Home For Sale in Birchleigh North – Secure Enclosed Area

Step into the perfect blend of comfort, style, and practicality with this stunning 4-bedroom home located in the sought-after enclosed area of Birchleigh North. Designed with modern family living in mind, this immaculate property offers space, security, and exceptional entertainment features.

The home welcomes you with a fully tiled open-plan lounge, dining room, and cosy family room, all bathed in natural sunlight. The lounge features a built-in fireplace and a sliding door that leads out to your beautifully maintained garden and sparkling pool – the ideal setting for entertaining guests or relaxing with the family.

At the heart of the home is a stylish, fully tiled modern kitchen boasting granite countertops, a 5-plate gas stove with extractor fan,...

Features

| Pets Allowed | | Yes | |
|--------------|---|----------|-----|
| Interior | | Exterior | |
| Bedrooms | 4 | Garages | 2 |
| Bathrooms | 2 | Security | Yes |
| Kitchens | 1 | Pool | Yes |
| Recep. Rooms | 4 | | |
| Sizes | | | |
| Land Size | | 991m² | |