



3 Bedroom House For Sale in Birchleigh North



Tremaine Pillay
0665398482
tremaine@cleproperties.co.za

Contact Head Office - Kempton Park

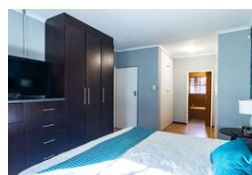
011 9758537

12 Duffton Way
Aston Manor
Kempton Park

NEW



Web Ref 7085096



R1,650,000

3 2 2

Monthly Bond Repayment R16,751.28

Calculated over 20 years at 10.75% with no deposit.

Transfer Costs R52,453.00 **Bond Costs** R30,875.00

These calculations are only a guide. Please ask your conveyancer for exact calculations.

Modern 3-Bedroom Home with 2-Bedroom Cottage for Sale in Birchleigh North – Secure Enclosed Area

Modern 3-Bedroom Home with 2-Bedroom Cottage for Sale in Birchleigh North – Secure Enclosed Area

This beautiful, move-in-ready home is located in a secure enclosed area of Birchleigh North, complete with a guard house. Step into a spacious, modern open-plan family room, kitchen, lounge, and dining area, fully tiled and featuring a built-in fireplace. The chef's kitchen offers granite tops, ample cupboard space, a four-plate electric stove with undercounter oven, extractor fan, room for all appliances, and a separate scullery. There are two tiled lounges (one with ceiling fan), a dedicated study, and three well-sized bedrooms with built-in cupboards and laminated flooring. The main bedroom features both laminated and carpeted flooring.

The home includes two full bathrooms:

- A guest bathroom with bath, shower, his &...

Features

Pets Allowed	Yes				
Interior		Exterior		Sizes	
Bedrooms	3	Garages	2	Land Size	991m²
Bathrooms	2	Security	Yes		
Kitchens	1	Dom. Accom.	1		
Recep. Rooms	5	Pool	Yes		
Studies	1				