

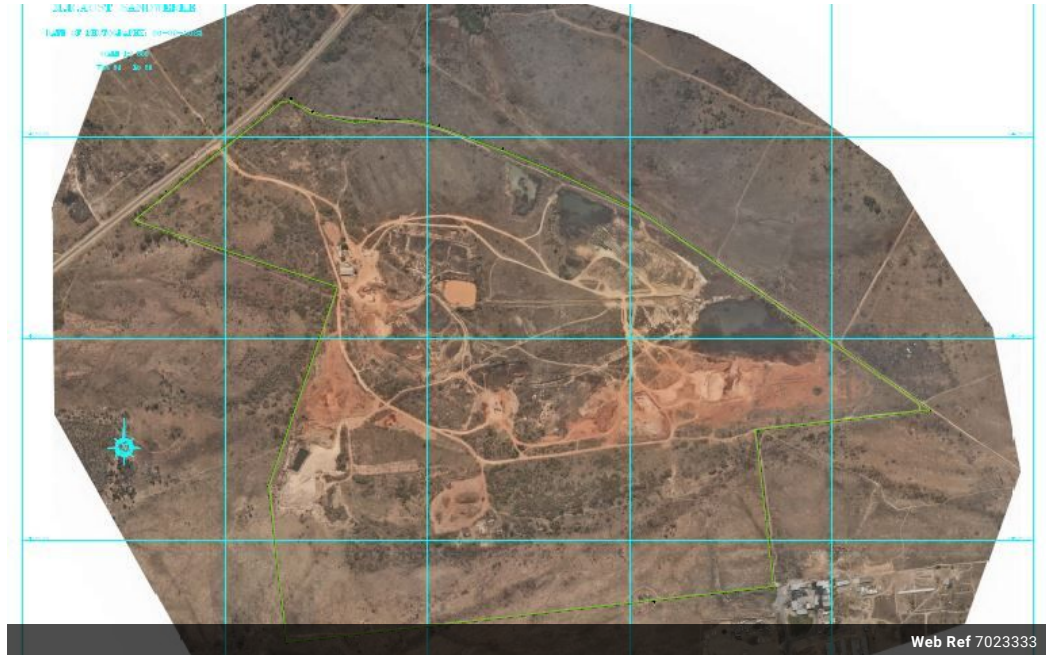
Alett Nel

Non-Principal Property
Practitioner
Registered with PPRA
(FFC 121 758 7)
0784226651
a.nel@cleproperties.co.za

Contact Head Office - Kempton
Park

011 9758537

12 Duffton Way
Aston Manor
Kempton Park



Web Ref 7023333



R50,000,000

Monthly Bond Repayment R499,189.94

Calculated over 20 years at 10.5% with no deposit.

Transfer Costs R6,172,826.00 **Bond Costs** R132,285.00

These calculations are only a guide. Please ask your conveyancer for exact calculations.

WELL-SITUATED SAND & QUARRY MINE WITH HIGH-DENSITY HOUSING POTENTIAL

WELL-SITUATED SAND & QUARRY MINE WITH HIGH-DENSITY HOUSING POTENTIAL

THE PRICE IS VAT EXCLUSIVE

Well situated operational sand mine and quarry on 142.79 hectares, in Mamelodi/Cullinan. It has a licence to operate until 2034 and will be extended thereafter as the mine has ample sand and stone reserves to mine for many more years. Currently also supplying road building materials for the extensive road building projects that are underway in and around Tshwane.

The application process for the establishment of 3 751 housing units, was approved by the Tshwane Municipality, up to the point that the required bulk services are not available in the area as yet. With all the developments that are currently taking place in the direct vicinity, these services will soon be available.

The property on offer thus has a dual value,...

Features