



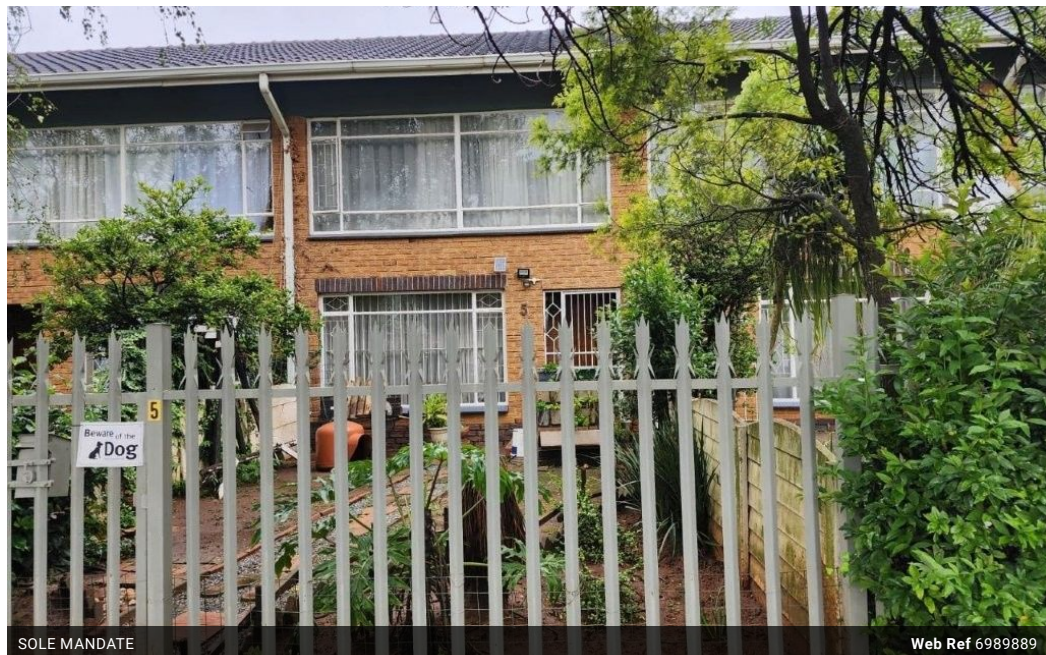
**Henry Nieuwenhuizen**

Candidate Property Practitioner  
Registered with PPRA  
(FFC 114 071 2)  
0769614434  
henry@cleproperties.co.za

Contact Bonaero Park

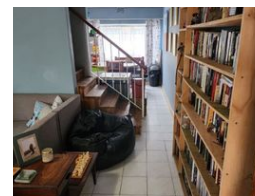
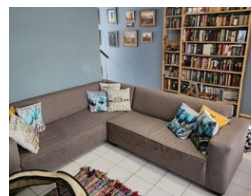
011 3954661

Shop 31 Aero Centre  
Cnr Templehof  
South & Atlas Road  
Bonaero Park



SOLE MANDATE

Web Ref 6989889



# R850,000

2 1 1

**Monthly Bond Repayment** R8,629.45

Calculated over 20 years at 10.75% with no deposit.

**Transfer Costs** R28,244.00 **Bond Costs** R21,450.00

These calculations are only a guide. Please ask your conveyancer for exact calculations.

**Monthly Rates** R702

### 2-bedroom, 1-bathroom home

2-bedroom, 1-bathroom home  
Dear Happy New Owner...

LIGHTLY TRAVELED STREET...

You will find this attractive lock-up and go duplex in the sought after neighbourhood of Rynfield.

Step inside and discover an open plan layout connecting the spacious lounge and dining area flowing into the open plan kitchen.

The kitchen is convenient with melamine cupboards, tiled floors and a pantry cupboard with ample cupboard space. For your cooking experiences a four-plate stove with glass hob and undercounter oven also forms part of this lovely kitchen.

On the upper level you will find a generously sized main bedroom with built in cupboards as well as a second bedroom with enough cupboard space and natural light shining through. The bathroom is renovated, fully tiled, fitted with a walk-in shower and pleasing to the eye....

## Features

**Pets Allowed** Yes

### Interior

Bedrooms	2
Bathrooms	1
Kitchens	1
Recep. Rooms	1

### Exterior

Garages	1
Security	Yes
Pool	No

### Sizes

Floor Size	111m²
------------	-------