



22,500m² Farm For Sale in Benoni AH



**Willem Du Plessis**  
0735145046  
willem@cleproperties.co.za

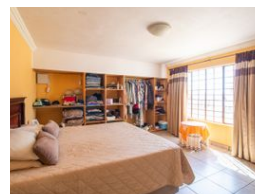
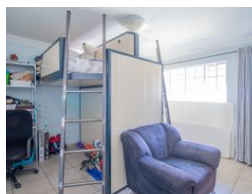
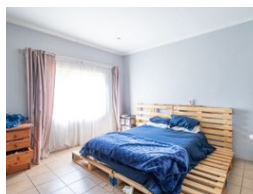
Contact Head Office - Kempton Park

011 9758537

12 Duffton Way  
Aston Manor  
Kempton Park



Web Ref 6643104



**R3,490,000**

3 3 4

**Monthly Bond Repayment** R35,431.49

Calculated over 20 years at 10.75% with no deposit.

**Transfer Costs** R220,614.00 **Bond Costs** R47,840.00

These calculations are only a guide. Please ask your conveyancer for exact calculations.

## For Sale: Versatile Property with Multiple Homes and Commercial Space

For Sale: Versatile Property with Multiple Homes and Commercial Space

Explore this expansive 22,500 sqm property, offering a unique blend of residential and commercial opportunities. This versatile estate features three distinct homes and a 120 sqm store or factory, making it ideal for multi-generational living, rental income, or business ventures.

The first house is spacious and designed for comfort. It includes three bedrooms and two bathrooms, with an open-plan living area that seamlessly integrates the dining room and modern kitchen. The property also boasts a double-volume garage that can accommodate up to four cars, ensuring ample space for both vehicles and storage.

The second house presents a generous layout with two bedrooms and a study. It features a huge open-plan kitchen and living area, designed with a...

## Features

### Interior

Bedrooms	3
Bathrooms	3
Kitchens	1
Recep. Rooms	2

### Exterior

Garages	4
Security	No
Pool	No

### Sizes

Land Size	22,500m²
-----------	----------