



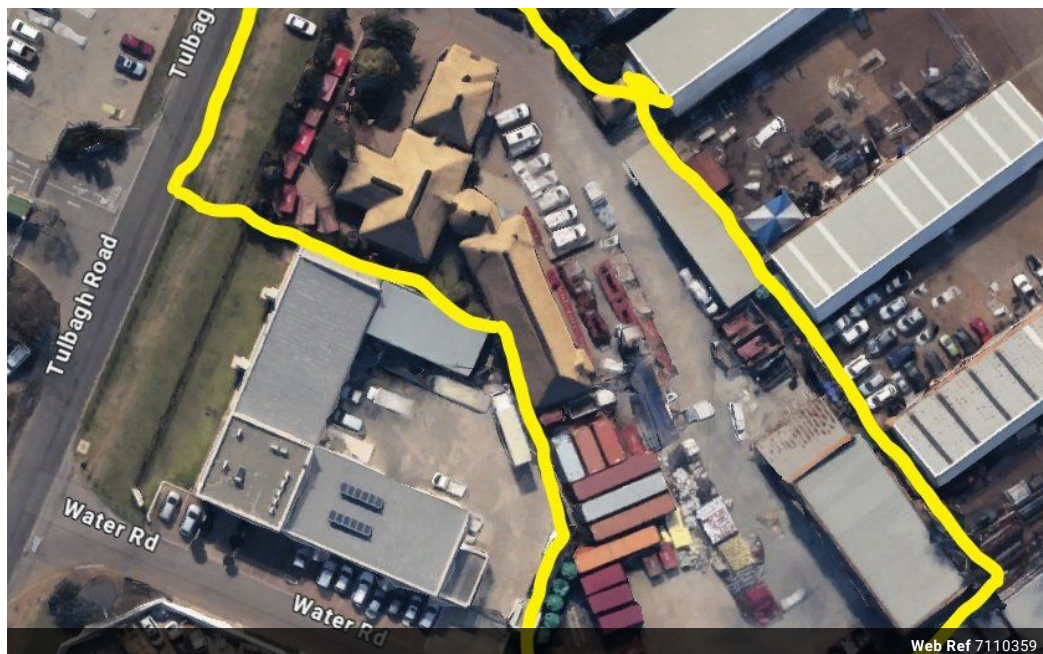
**Kobus Greyling**

Non-Principal Property  
Practitioner  
Registered with PPRA  
(FFC 122 040 7)  
0842760824  
kobus@cleproperties.co.za

Contact Head Office - Kempton  
Park

011 9758537

12 Duffton Way  
Aston Manor  
Kempton Park



R6,795,000



POMONA - LOCATION, LOCATION, LOCATION !!!!

#### COMMERCIAL PROPERTY.

Well-Positioned Property Near OR Tambo International Airport

An exceptional opportunity to secure a strategically located commercial property just minutes from OR Tambo International Airport.

Property Extent: ±5,366 sqm

Gross Building Area: ±860 sqm

Workshop: Spacious double-volume workshop with a mezzanine level—ideal for manufacturing, repairs, or warehousing

Yard: Extensive yard area perfect for truck access, container storage, or fleet parking

Access: Excellent connectivity to major arterial routes, including the R21 and N12 highways

#### Key Features:

Secure premises

Versatile usage potential

Close proximity to key logistics and transport hubs

Whether you're expanding your operations or seeking a high-visibility site for your business, this property offers the space, access,

### Features

**Zoning** Commercial

#### Sizes

Floor Size 1,000m<sup>2</sup>

Land Size 5,360m<sup>2</sup>