

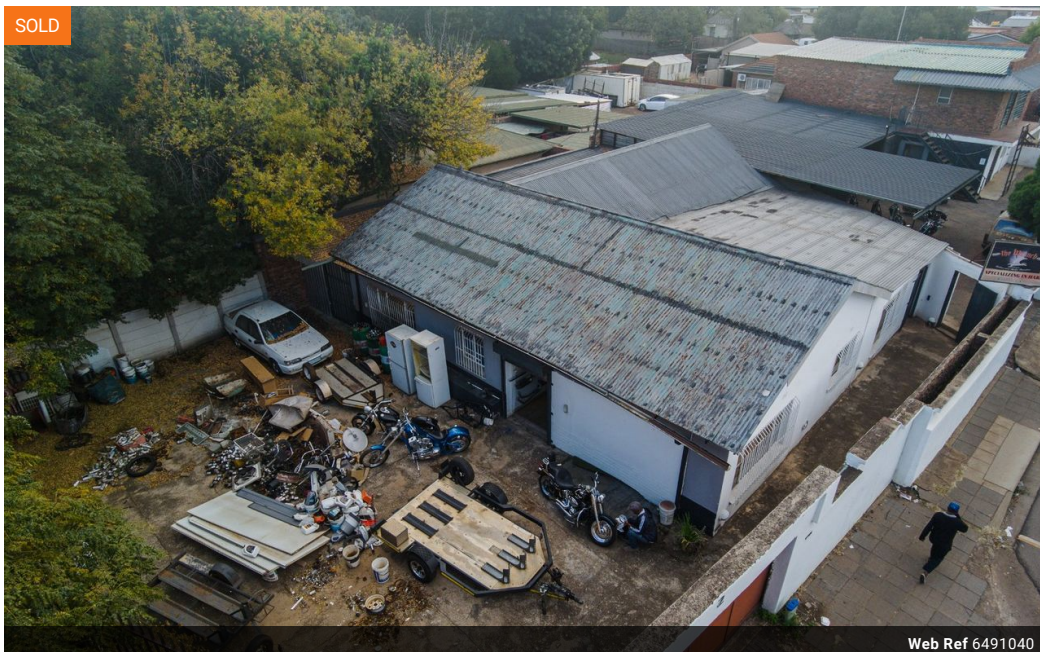
Alett Nel

Non-Principal Property
Practitioner
Registered with PPRA
(FFC 121 758 7)
0784226651
a.nel@cleproperties.co.za

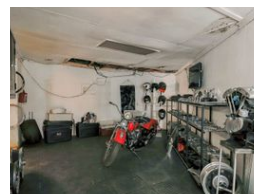
Contact Head Office - Kempton
Park

011 9758537

12 Duffton Way
Aston Manor
Kempton Park



Web Ref 6491040



R2,450,000

Monthly Rates R1,300 Excl. VAT



451m² Retail Sold in Lyttelton Manor

COMMERCIAL PROPERTY WITH LARGE SHOWROOM AND WORKSHOPS IN LYTTETLTON MANOR CLOSE TO MAIN ARTERIAL ROUTES

Excellent investment opportunity in a sought-after business hub.

Prime, secure commercial stand with large showroom/retail area and workshops, on Botha Avenue, close to the N1 highway and other main arterial routes.

Excellent roadside exposure for marketing purposes, with ample advertisement space on outer walls.

ideal as property currently stands or for demolition and redevelopment of the well-situated property.

Land – 1 264 sqm
Roofed area – 451 sqm

Zoned commercial and light industrial.

MAIN FEATURES:

Features

Zoning Commercial

Sizes

Floor Size 451m²
Land Size 1,264m²